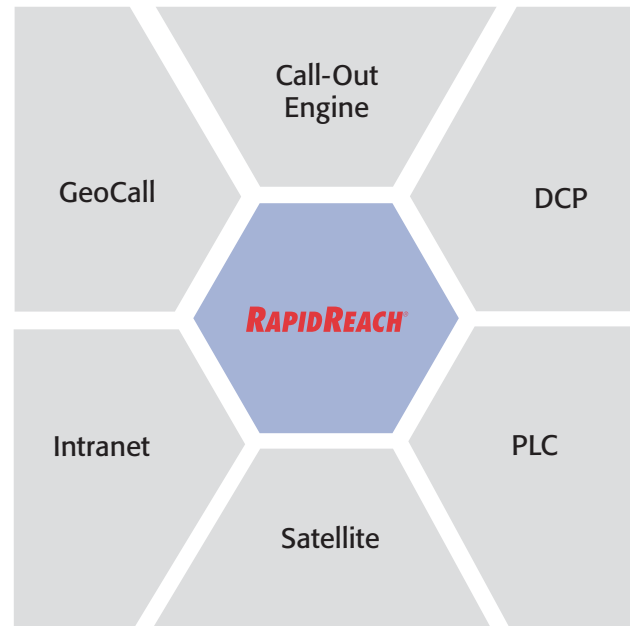


GeoCall



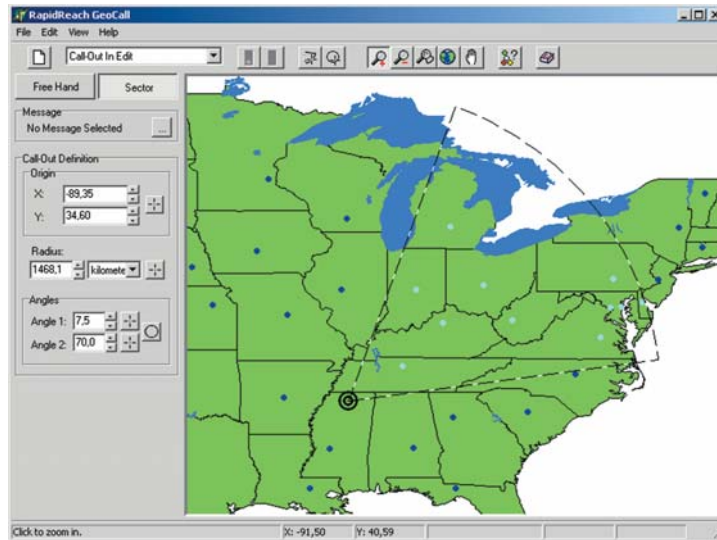
**Add the power of GIS
to your emergency communications**



When hurricanes, tornadoes, floods or earthquakes, or radiation leaks and industrial accidents threaten whole neighbourhoods, residents need to be notified. GeoCall can handle these geographically defined call-outs, quickly and effortlessly. You can't afford to be without it - lives depend on it!

What is the RapidReach GeoCall?

For years Enea's RapidReach call-out software has been providing both businesses and governments all over the world with a quick and easy state-of-the-art solution for contacting people. With the release of RapidReach GeoCall, our proven call-out technology can now harness the power of GIS (Geographic Information Systems). Contacting people quickly and efficiently within a geographical location has never been easier. GIS systems allow you to associate names and numbers with points on a map. With GeoCall, our powerful technology allows you to efficiently tackle a problem that was impossible 10 years ago. One person can now call every resident in the neighbourhood in a matter of minutes, and log every call.



Activating

Defining and starting a call-out in RapidReach GeoCall is done in seconds. First, select the desired call-out area on the map with a few clicks of the mouse. The people to receive the message are identified. Then, select a prerecorded message or record one "on-the-fly". Finally, press "Start" and watch RapidReach GeoCall as it contacts recipients and tabulates the results.

Selecting

Geographical selections can be automatically generated with pie sections around the hazard, or by drawing an irregular shape with a mouse.

Calling

During a call-out, RapidReach GeoCall keeps you informed of the status of each and every selected recipient by constantly updating your map with colour coded results. These results, together with call-out parameters, are automatically saved - allowing you to evaluate responses to the incident, in real-time.

RapidReach GeoCall enables:

- Access to the powerful emergency call-out technology of RapidReach using a visual and user-friendly GIS interface.
- Use of your existing map files and recipient data. GeoCall supports all major map formats.
- Quick definition of a call-out area by clicking on the map or by manually entering actual latitude/longitude coordinates, angles and distances.
- Advanced definition of an irregular call-out area. Definition of an irregular area can easily be made by adding and removing parts.
- Prioritization of calls. For instance, recipients closer to the incident origin may need to be contacted first.
- Selection from your already recorded RapidReach messages, or recording of new ones.
- Activation of one or multiple call-outs and visual monitoring of their progress.
- Reviews and analyses of old call-outs.

